



PURSUING WISDOM ...

IMPACTING OUR WORLD

PROVIDENCE

CLASSICAL SCHOOL

Christ-Centered Academic Excellence

Our Mission

Providence Classical School is a Christian school using the classical model to train students to impact their culture for Christ.



A background image showing a group of students, with a young woman in the foreground looking upwards and smiling, and other students visible behind her.

Our Vision

At Providence Classical School, we desire that our students will be transformed by the renewing of their minds. Our community is committed to daily training our students to have the necessary knowledge, skills, and character to effectively succeed and lead in our ever-changing culture. To that end, we seek to lead our students to become ideal PCS graduates: young men and women known for their Character, Discernment, Communication, and Knowledge.



In their CHARACTER, graduates will...

- Seek to bear nobly the image of Christ.
- Demonstrate discipline, honor, and integrity in a well-balanced life.



In their DISCERNMENT, graduates will...

- Listen, evaluate, and reason through the filter of a coherent and Biblical worldview.
- Desire and exercise wisdom for wisdom's sake above any pragmatic ends.



In their COMMUNICATION, graduates will...

- Employ clarity, logic, and style in both speech and composition.
- Articulate respectfully and defend winsomely their positions with confidence and intelligence.



In their KNOWLEDGE, graduates will...

- Understand that God is the author and fount of all truth, goodness, and beauty.
- Engage in the "great conversation" and in a lifelong pursuit of learning.

Classical Education

In Ancient Greece and Rome and throughout the Middle Ages, educators sought not only to teach their students facts but also to cultivate in them wisdom and virtue. Instruction became focused on the Liberal Arts – which included scientific and mathematical exploration – so that students would learn to reason clearly and communicate effectively. Students saw the world as an integrated whole, not discrete subjects, and studied its interconnectedness to learn more about God as the source of the creation. Modern classical & Christian education seeks to revive this holistic approach and to use the tools of learning inherent in the first three Liberal Arts – the Trivium of Grammar, Logic, and Rhetoric – to work with the grain of the child as educators train their minds and affections toward knowledge, understanding, and wisdom.



Grammar (Pre-Kindergarten – 6th grade)

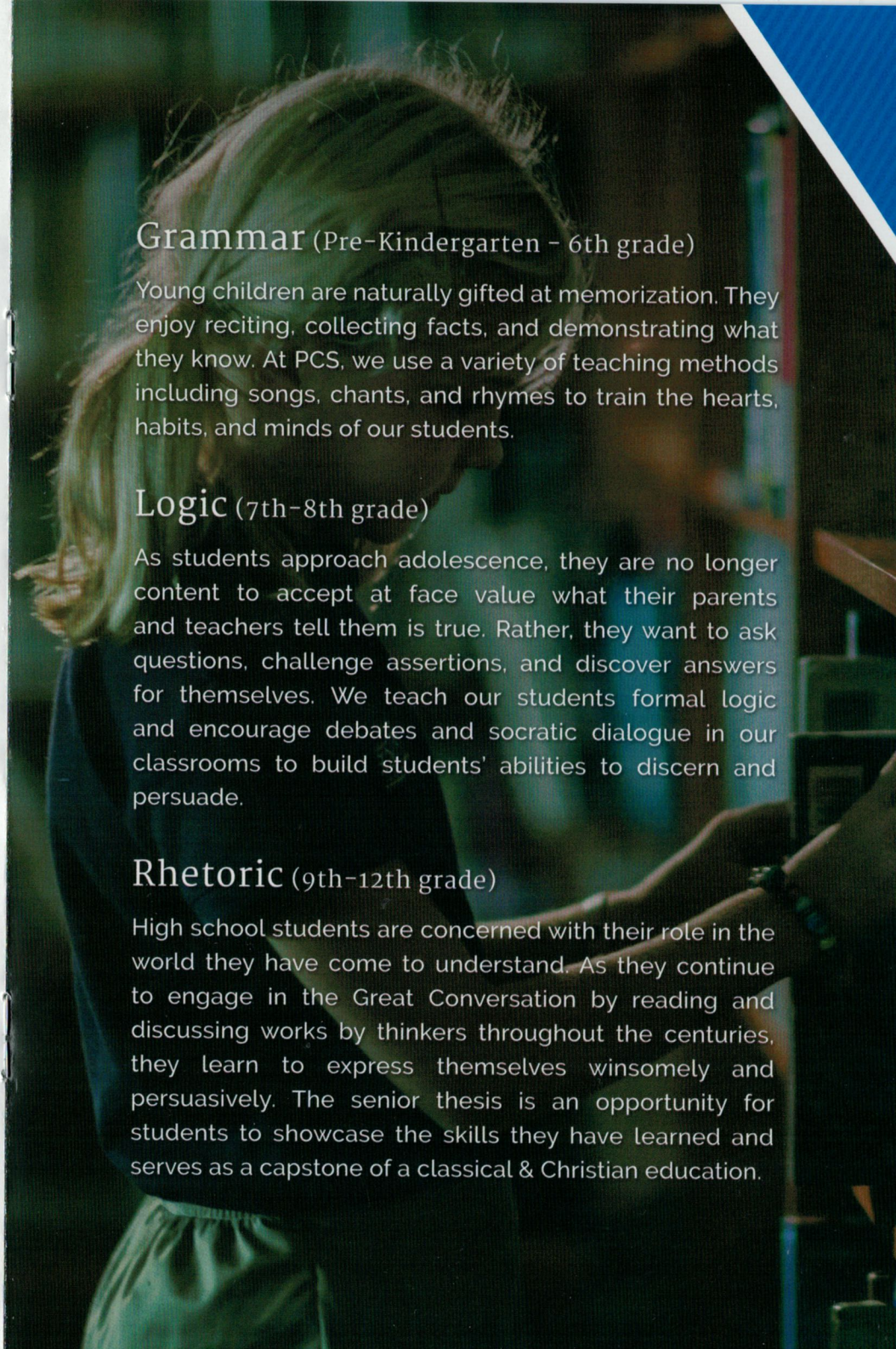
Young children are naturally gifted at memorization. They enjoy reciting, collecting facts, and demonstrating what they know. At PCS, we use a variety of teaching methods including songs, chants, and rhymes to train the hearts, habits, and minds of our students.

Logic (7th–8th grade)

As students approach adolescence, they are no longer content to accept at face value what their parents and teachers tell them is true. Rather, they want to ask questions, challenge assertions, and discover answers for themselves. We teach our students formal logic and encourage debates and socratic dialogue in our classrooms to build students' abilities to discern and persuade.

Rhetoric (9th–12th grade)

High school students are concerned with their role in the world they have come to understand. As they continue to engage in the Great Conversation by reading and discussing works by thinkers throughout the centuries, they learn to express themselves winsomely and persuasively. The senior thesis is an opportunity for students to showcase the skills they have learned and serves as a capstone of a classical & Christian education.





Frequently Asked Questions

How is Providence different from other schools?

Some Christian schools label themselves as such by merely including a Bible class in the curriculum. At Providence Classical School, a Christian worldview permeates everything we do, teach, think, and say. Biblical thinking is integrated into every subject at all levels of the trivium.

Is Providence Classical School accredited?

Providence has been an accredited member of the Association of Classical and Christian Schools (ACCS) since 2006. The ACCS is recognized by TEPSAC (Texas Private School Accreditation Commission) as a valid accrediting agency.

Is Providence associated with a denomination or a local church?

Providence Classical School is an interdenominational school that is not affiliated with a particular church. We strive to build a distinctively Christian institution committed to the Word of God as the sole authority for all walks and areas of life.

Are fine arts programs available?

Yes, all students in kindergarten through 6th grade have both music and art classes each week. Beginning in 7th grade, choir and art classes are available as electives. There are also a number of opportunities for private and group instruction in various instruments outside of the school day.

What sports are offered?

In both middle school and high school, students may participate in cross country, volleyball, basketball, track, golf, tennis, and baseball.

What other extracurricular activities are offered?

Grammar school students may participate in Math Olympiad and choir. In the upper school, extracurricular activities include fine arts opportunities, yearbook, student council, Science Olympiad, and mock trial.

What is the House System?

The house system, based on the system used in British boarding schools, is used in the upper school to foster community and provide mentoring and leadership opportunities for students. Seventh through twelfth graders are divided into four houses: Dragon, Gryphon, Leviathan, and Phoenix. House activities include an annual upper school retreat, house games, chapels, and lunches together.



Next Steps

Schedule A Tour



www.pcsclassical.org



281-320-0500



18100 Stuebner Airline Rd.
Spring, TX 77379

Connect With Us



@pcspaladins



www.facebook.com/pcsclassical



[www.youtube.com/channel/
UCiL3JRxpMmmv8Rc8Vi7dBgg](https://www.youtube.com/channel/UCiL3JRxpMmmv8Rc8Vi7dBgg)



Thank you for your consideration of Providence Classical School! Recognizing that children spend at least thirty-five hours each week at school, we want you to know that we do not take this responsibility lightly. We are committed to guiding the hearts of our students and teaching with excellence. Our teachers, the most influential asset of our school, love the Lord, love their students, and are passionate about the subjects they teach.

Please browse our website and learn about the mission, vision, and programs at PCS. Contact our Admissions Office to schedule a visit on our campus.



www.pcsclassical.org | 281-320-0500

18100 Stuebner Airline Rd. Spring, TX 77379